

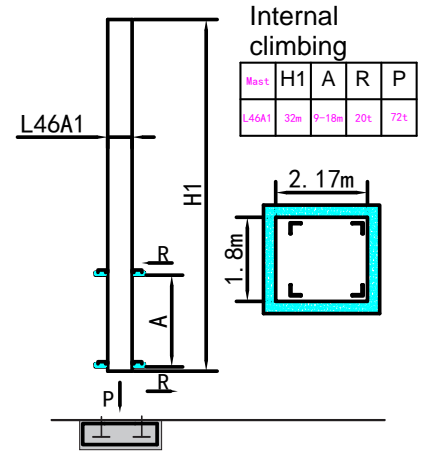
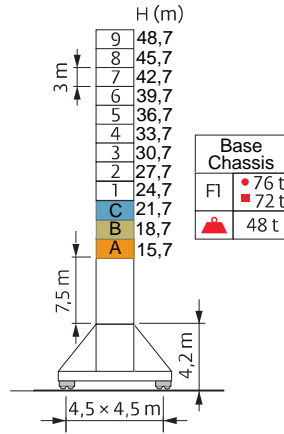
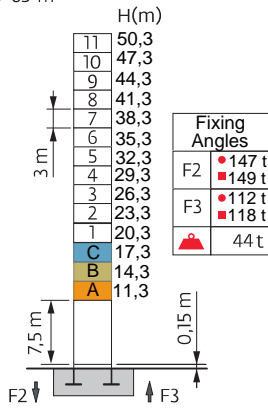
New Topless

Mast Reactions

Реакция опор мачты

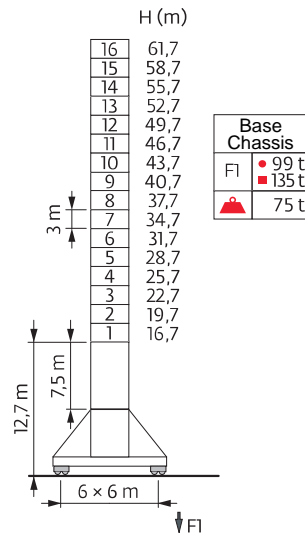
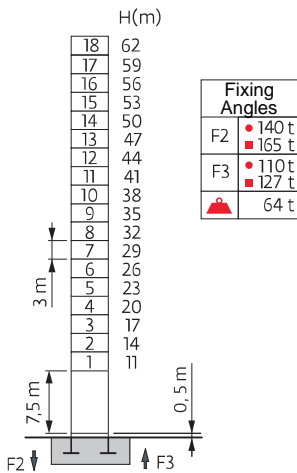
1,6 m

30 m → 65 m



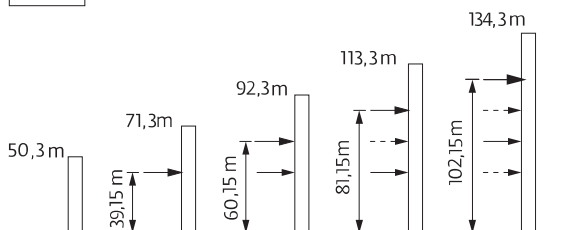
2 m

30 m → 65 m

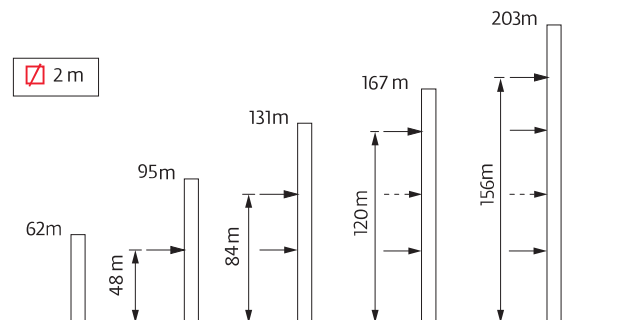


Anchorage / Анкера

1,6 m



2 m



Load curves / Кривые нагрузок



R (m)	Fail	R.C _{max} (m)	C _{max} (t)	20	25	30	35	40	45	50	55	60	65
65m		14.8	10.0	7.09	5.44	4.35	3.57	2.98	2.52	2.16	1.86	1.61	1.40
		27.3	5.0	5.0	5.0	4.45	3.67	3.08	2.62	2.26	1.96	1.71	1.50
60m		16.5	10.0	8.09	6.29	5.09	4.24	3.60	3.10	2.70	2.37	2.10	
		31.0	5.0	5.0	5.0	5.0	4.34	3.70	3.20	2.80	2.47	2.20	
55m		17.5	10.0	8.64	6.74	5.48	4.57	3.89	3.37	2.95	2.60		
		33.0	5.0	5.0	5.0	5.0	4.67	3.99	3.47	3.05	2.70		
50m		17.8	10.0	8.79	6.86	5.58	4.66	3.97	3.43	3.00			
		33.5	5.0	5.0	5.0	5.0	4.76	4.07	3.53	3.10			
45m		19.0	10.0	9.44	7.30	5.88	4.86	4.09	3.50				
		34.8	5.0	5.0	5.0	5.0	4.96	4.19	3.60				
40m		19.3	10.0	9.60	7.44	6.00	4.97	4.20					
		35.4	5.0	5.0	5.0	5.0	5.0	4.30					
35m		19.3	10.0	9.60	7.44	6.00	4.97						
		35.0	5.0	5.0	5.0	5.0	5.0						
30m		19.3	10.0	9.60	7.44	6.00							
		30.0	5.0	5.0	5.0	5.0							

Counter jib ballast / Противовес стрелы

	2600 kg	1000 kg		(kg)
65 m	6	2	14,85m.	17.600
60 m	6	2	14,85m.	17.600
55 m	6	2	14,85m.	17.600
50 m	6	1	14,85m.	16.600
45 m	5	2	14,85m.	15.000
40 m	5	1	14,85m.	14.000
35 m	4	2	14,85m.	12.400
30 m	4	1	14,85m.	11.400

Mécanismes / Triebwerke / Mechanisms / Mecanismos / Meccanismi / Mecanismos / Механизмы

400 V - 50 Hz					ch - PS hp	kW			
	40 LVF 20	m/min t	0 → 80 2	0 → 40 4	0 → 40 4	0 → 20 8	40	30	500 m
	BP6555X	m/min	0 → 65			7,5	5,5		
	2RVF5.5	tr/min U/min -rpm	0 → 0,6			2x7,5	2x5,5		

CEI38	IEC38	KVA
400 V (+10% - 10%) 50Hz		40 LVF : 60 kVA