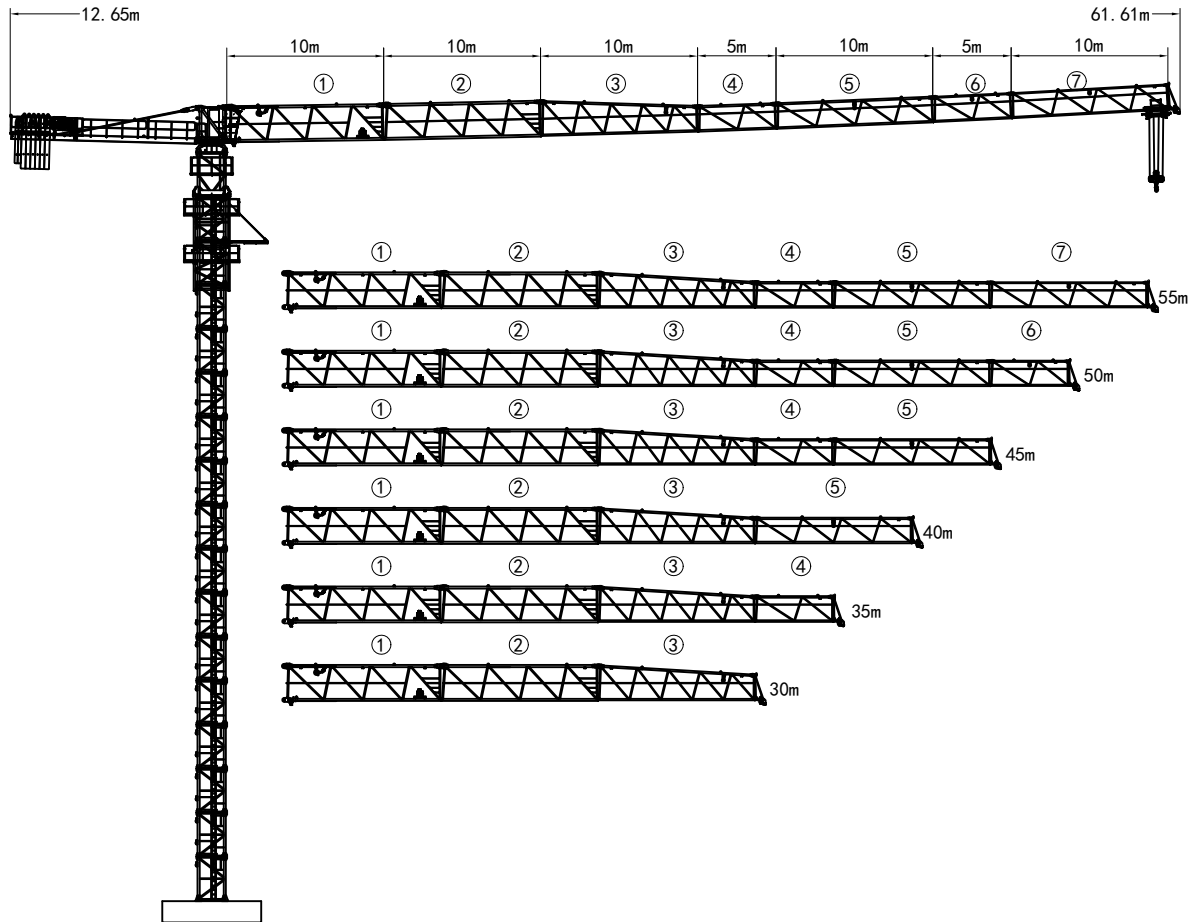
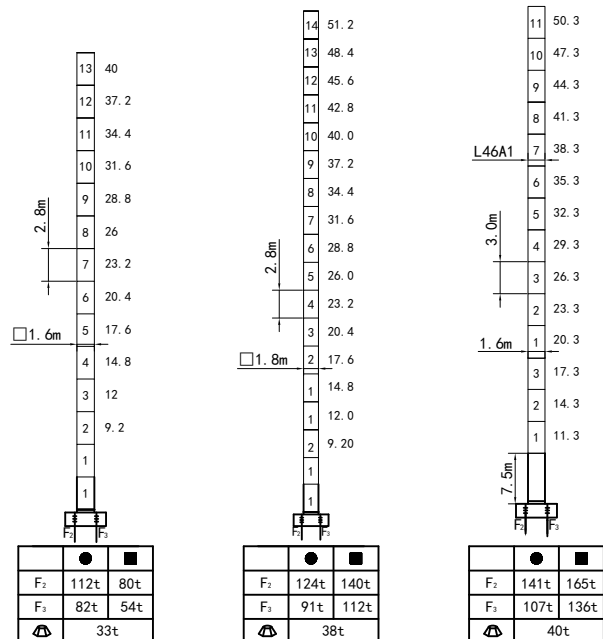


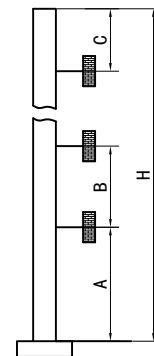
外形尺寸 Outline Dimensions



塔身截面 Masts



附着 Anchorages



Mast	A	B	C	H
□ 1.6	32.2m	25.2m	32.2m	200m
□ 1.8	43.4m	30.8m	37.8m	200m
L46A1	42.15m	27.0m	31.5m	200m

● 工作状态支反力 in service Reaction ■ 非工作状态支反力 Out of service Reaction
 ⚠ 不含平衡重及压重塔机独立高度重量 Total weight of free standing crane (exclude Counter weight & ballast)

附着道数: Number of tie collors=(H-A-C)/B+1

载荷特性表 Load Diagrams 10t

R (m)	Fall	R.C _{max} (m)	C _{max} (t)	15	20	25	30	35	40	45	50	55	60
60m		12.0	10.0	7.85	5.70	4.41	3.55	2.94	2.48	2.12	1.83	1.60	1.40
		22.8	5.0	5.0	5.0	4.51	3.65	3.04	2.58	2.22	1.93	1.70	1.50
55m		13.0	10.0	8.57	6.24	4.85	3.92	3.25	2.75	2.36	2.05	1.80	
		24.8	5.0	5.0	5.0	4.95	4.02	3.35	2.85	2.46	2.15	1.90	
50m		13.5	10.0	8.93	6.53	5.08	4.12	3.44	2.92	2.52	2.20		
		25.8	5.0	5.0	5.0	5.0	4.22	3.54	3.02	2.62	2.30		
45m		14.5	10.0	9.63	7.03	5.47	4.43	3.69	3.13	2.70			
		27.6	5.0	5.0	5.0	5.0	4.53	3.79	3.23	2.80			
40m		14.8	10.0	9.83	7.14	5.52	4.45	3.68	3.10				
		27.7	5.0	5.0	5.0	5.0	4.55	3.78	3.20				
35m		15.0	10.0	10.0	7.33	5.73	4.66	3.90					
		28.7	5.0	5.0	5.0	5.0	4.76	4.00					
30m		15.0	10.0	10.0	7.35	5.76	4.70						
		28.9	5.0	5.0	5.0	5.0	4.80						

载荷特性表 Load Diagrams 8t

R (m)	Fall	R.C _{max} (m)	C _{max} (t)	15.0	20	25	30	35	40	45	50	55	60
60m		15.4	8.0	8.0	5.95	4.59	3.68	3.03	2.54	2.16	1.86	1.61	1.40
		28.6	4.0	4.0	4.0	4.0	3.78	3.13	2.64	2.26	1.96	1.71	1.50
55m		16.5	8.0	8.0	6.83	5.23	4.01	3.32	2.80	2.39	2.07	1.80	
		30.7	4.0	4.0	4.0	4.0	4.0	3.42	2.90	2.49	2.17	1.90	
50m		17.5	8.0	8.0	6.88	5.32	4.28	3.54	2.98	2.55	2.20		
		32.3	4.0	4.0	4.0	4.0	4.0	3.64	3.08	2.65	2.30		
45m		18.5	8.0	8.0	7.24	5.60	4.51	3.74	3.15	2.70			
		35.1	4.0	4.0	4.0	4.0	4.0	3.84	3.25	2.80			
40m		18.7	8.0	8.0	7.38	5.67	4.53	3.74	3.15				
		35.1	4.0	4.0	4.0	4.0	4.0	3.84	3.25				
35m		19.0	8.0	8.0	7.55	5.85	4.71	3.90					
		35.0	4.0	4.0	4.0	4.0	4.0	4.0					
30m		18.5	8.0	8.0	7.55	5.85	4.71						
		30.0	4.0	4.0	4.0	4.0	4.0						

机构 Mechanisms 8/10t

名称							容绳量 m	电机功率 kW
			m/min	t	m/min	t		
起升 Hoisting	8t	30LVF20	0-80	2.0	0-40	4.0	360	30
			0-40	4.0	0-20	8.0		
	10t	45LVF25	0-80	2.5	0-40	5.0	500	45
			0-40	5.0	0-20	10.0		
变幅 Trolleying	8t	BP4033X	0-40 m/min					3.3
	10t	BP6055X	0-60 m/min					5.5
回转 Slewing	2RVF4		0-0.6 rpm					4.0×2
电源 Power	380V (±10%) /50Hz		30LVF20: 41.3kW 45LVF25:58.5kW					

平衡重 Counter weight

			PHZ2600	PHZ1800	PHZ1000
60m	12.65m	18400kG	6	1	1
55m	12.65m	17400kG	6	1	/
50m	12.65m	16600kG	6	/	1
45m	12.65m	15800kG	5	1	1
40m	12.65m	14800kG	5	1	/
35m	12.65m	13200kG	4	1	1
30m	12.65m	12200kG	4	1	/